

# Descendants of John Waite and Phoebe Matteson

1. **John<sup>1</sup> Waite**, born<sup>1</sup> 1755; died<sup>2</sup> 1814 in Jefferson Co. NY. He married **Phoebe Matteson**, born<sup>3,4</sup> 6 May 1757 in West Greenwich, Kent, RI; died<sup>5,6</sup> 1813 in Shaftsbury, Bennington, VT; buried<sup>7</sup> in Shaftsbury, Bennington, VT, daughter of Nathan Matteson and Freelove Bowen.

Jennie's letter provided the information on the parents of this group of siblings. The siblings belong together and John and Phoebe had a Bowen Waite who served in the war of 1812. The timing is right. She was looking for information on the parents of John Waite. John was a resident of Whitingham or Shaftsbury, VT. John removed to Black River, Jefferson, NY with his sons after the death of Phoebe in 1813. (JSE)

Children of John Waite and Phoebe Matteson were as follows:

- + 2 i **Benjamin<sup>2</sup> Waite.**
- + 3 ii **Job<sup>2</sup> Waite.**
- 4 iii **John<sup>2</sup> Waite.**
- 5 iv **William<sup>2</sup> Waite.**
- + 6 v **Bowen<sup>2</sup> Waite.**
- + 7 vi **Nathan W.<sup>2</sup> Waite.**

## *Generation 2*

2. **Benjamin<sup>2</sup> Waite** (John<sup>1</sup>). He married unknown.

Children of Benjamin Waite were as follows:

- + 8 i **Dennis M.<sup>3</sup> Waite.**

3. **Job<sup>2</sup> Waite** (John<sup>1</sup>), born<sup>8</sup> 11 Jan 1784 in Shaftsbury, Bennington, VT; died 2 Dec 1863. He married on 15 Feb 1814 **Betsey Slocum**, born<sup>9</sup> 18 Jul 1788 in Bennington, Bennington, VT. Census<sup>10</sup> Shaftsbury, Bennington, VT (1840). Census<sup>11</sup> Shaftsbury, Bennington, VT (26 Aug 1850). A Vermont settler in Jefferson, County, NY. Removed from Whittingham to Rodman.

Children of Job Waite and Betsey Slocum were as follows:

- 9 i **Enoch K.<sup>3</sup> Waite**, born<sup>12</sup> 1825 in Vermont.
- 10 ii **John<sup>3</sup> Waite**, born<sup>13</sup> 1829 in Vermont.

---

<sup>1</sup>Shirley Becker; skncr@home.com, PLAIN - Plain Sweet (<http://www.gencircles.com/users/sbckr/2>).

<sup>2</sup>Ibid.

<sup>3</sup>JSE - Records of Jennie Smith Edwards. "...1758."

<sup>4</sup>Shirley Becker; skncr@home.com, PLAIN - Plain Sweet (<http://www.gencircles.com/users/sbckr/2>).

<sup>5</sup>JSE - Records of Jennie Smith Edwards.

<sup>6</sup>Shirley Becker; skncr@home.com, PLAIN - Plain Sweet (<http://www.gencircles.com/users/sbckr/2>).

<sup>7</sup>JSE - Records of Jennie Smith Edwards.

<sup>8</sup>USC1850 Shaftsbury, Bennington, Vermont, Roll 921 Pg. 6 86:92, 26 Aug 1850.

<sup>9</sup>Ibid. Roll 921 Pg. 6 86:92.

<sup>10</sup>USC1840 Shaftsbury, Bennington, Vermont, W300 #297.

<sup>11</sup>USC1850 Shaftsbury, Bennington, Vermont, Roll 921 Pg. 6 86:92. "86 92 Job Wait 68 M farmer 300 NH; Betsey 68 F VT; Enoch 25 M VT; John 21 M VT".

<sup>12</sup>Ibid. Roll 921 Pg. 6 86:92.

6. **Bowen<sup>2</sup> Waite** (John<sup>1</sup>), born<sup>14, 15, 16</sup> 9 Aug 1792 in Vermont; died<sup>17, 18</sup> 25 Nov 1862 in Rodman, Jefferson, NY; buried<sup>19</sup> in Fairview Cemetery, Rodman, Jefferson, NY. He married<sup>20</sup> on 21 Jan 1816 in Whittington, Windham, VT **Polly Putnam**, born<sup>21, 22</sup> May 1794 in Whittingham, VT; died<sup>23, 24, 25, 26</sup> 25 Oct 1886 in Rodman, Jefferson, NY; buried<sup>27</sup> in Fairview Cemetery, Rodman, Jefferson, NY, daughter of Israel Putnam. Census<sup>28</sup> Rodman, Jefferson, NY (1850). A Vermont settler in Jefferson County NY. Removed from Whittingham to Rodman. Bowen resided at Shaftsbury, VT and Rodman, NY. My records are unclear, but it appears that at least Nathan, John, Job, William and Benjamin were brothers and that Bowen was a sibling as well. According to JSE Bowen served in the War of 1812 from Plattsburg NY. After his marriage in 1816 he removed to Rodman, Jefferson, NY. (JSE)

### Child's Gazetteer of Jefferson County - Town of Rodman

*"Nathan, John, Job, Benjamin, William, and Bowen Wait, brothers, came from Vermont to this town among the early settlers. Bowen Wait married Polly Putnam, of Whittingham, Vt. and about 1816 settled near Unionville, where he followed the dual occupation of carpenter and millwright until his death. He had 11 children, 10 of whom attained maturity, namely: Adaline E. Martha J. Elon G. Almeron B. Mary M. Phoebe J. Lydia C. Martin P. and Adelia A. Martin P. Wait was born in Rodman, September 11, 1831. In 1850 he married Mary E. daughter of Josph Clark, of Lyme, and settled on road 42, where he built a saw-mill, which he conducted for about 30 years, when he sold out and removed to the farm where he now resides. Mr. Wait was road commissioner for eight years, and has built many of the bridges in the town. He has three children living, namely: Viola B. Nora A. and Burt P."* (JEFF)

Children of Bowen Waite and Polly Putnam were as follows:

- |      |      |   |
|------|------|---|
| 11   | i    | <b>Adeline E.<sup>3</sup> Waite.</b>                                    |
| 12   | ii   | <b>Martha J.<sup>3</sup> Waite.</b>                                     |
| + 13 | iii  | <b>Almonson or Almeron B.<sup>3</sup> Waite.</b>                        |
| 14   | iv   | <b>Sabra<sup>3</sup> Waite.</b>   |
| + 15 | v    | <b>Elon G.<sup>3</sup> Waite.</b>                                       |
| 16   | vi   | <b>Mary Melissa<sup>3</sup> Waite.</b>                                  |
| + 17 | vii  | <b>Martin P.<sup>3</sup> Waite.</b>                                     |
| + 18 | viii | <b>Phoebe Jenette<sup>3</sup> Waite.</b>                                |
| 19   | ix   | <b>Lydia C.<sup>3</sup> Waite, born<sup>29</sup> 1836 in New York.</b>  |
| 20   | x    | <b>Adelia A.<sup>3</sup> Waite, born<sup>30</sup> 1837 in New York.</b> |

<sup>13</sup>Ibid. Roll 921 Pg. 6 86:92.

<sup>14</sup>JEFF - Jefferson County, New York GenWeb (<http://www.rootsweb.com/~nyjeffer/>). Fairview Cemetery, Rodman W-Z.

<sup>15</sup>SSOJ - Stoddard Sojourners; mmrichards@earthlink.net (<http://www.gencircles.com/users/rosetta>).

<sup>16</sup>CALC.

<sup>17</sup>JEFF - Jefferson County, New York GenWeb (<http://www.rootsweb.com/~nyjeffer/>). "...70y3m.". Fairview Cemetery, Rodman W-Z.

<sup>18</sup>Ibid. "...70y3m.". Town of Rodman, Jefferson County, New York, Cemetery Inscriptions S-Y; courtesy of A.E. Rogers and Ellen & John Bartlett.

<sup>19</sup>Ibid. Fairview Cemetery, Rodman W-Z.

<sup>20</sup>JSE - Records of Jennie Smith Edwards.

<sup>21</sup>JEFF - Jefferson County, New York GenWeb (<http://www.rootsweb.com/~nyjeffer/>). Fairview Cemetery, Rodman W-Z.

<sup>22</sup>CALC. "...Massachusetts."

<sup>23</sup>JEFF - Jefferson County, New York GenWeb (<http://www.rootsweb.com/~nyjeffer/>). Fairview Cemetery, Rodman W-Z.

<sup>24</sup>SSOJ - Stoddard Sojourners; mmrichards@earthlink.net (<http://www.gencircles.com/users/rosetta>).

<sup>25</sup>JEFF - Jefferson County, New York GenWeb (<http://www.rootsweb.com/~nyjeffer/>). Town of Rodman, Jefferson County, New York; Cemetery Inscriptions, S-Y; Courtesy of A.E. Rogers, Ellen & John Bartlett.

<sup>26</sup>Ibid. "...92y.". Town of Rodman, Jefferson County, New York, Cemetery Inscriptions S-Y; courtesy of A.E. Rogers and Ellen & John Bartlett.

<sup>27</sup>Ibid. Town of Rodman, Jefferson County, New York; Cemetery Inscriptions, S-Y; Courtesy of A.E. Rogers, Ellen & John Bartlett.

<sup>28</sup>USC1850 Rodman, Jefferson, New York. "449 13 202 213 Wait Bowen 58 m millwright 1000 RI Polly 56 f MA Martin 18 m carpenter NY Adelia 13 f NY Watts Edward 3 m NY Watts Sabra 28 f NY Watts Eben D L 5 m NY Wait Eliza 18 f NY".

<sup>29</sup>CALC. NOTE - she's probably the sister of Almonson. Residing with him in 1850.

<sup>30</sup>Ibid.

7. **Nathan W.<sup>2</sup> Waite** (John<sup>1</sup>), born<sup>31</sup> 1793 in Vermont. He married **Mary (---)**, born<sup>32</sup> 1804 in New York. Census<sup>33</sup> Antwerp, Jefferson, NY (1850).

Children of Nathan W. Waite and Mary (---) were as follows:

- |    |     |  |
|----|-----|--|
| 21 | i   | <b>Charles<sup>3</sup> Waite</b> , born <sup>34</sup> 1828.                |
| 22 | ii  | <b>Sherman<sup>3</sup> Waite</b> , born <sup>35</sup> 1831 in New York.    |
| 23 | iii | <b>Elsie Etta<sup>3</sup> Waite</b> , born <sup>36</sup> 1833 in New York. |
| 24 | iv  | <b>Leywith<sup>3</sup> Waite</b> , born <sup>37</sup> 1835 in New York.    |
| 25 | v   | <b>Cornelia<sup>3</sup> Waite</b> , born <sup>38</sup> 1837 in New York.   |
| 26 | vi  | <b>Louisa<sup>3</sup> Waite</b> , born <sup>39</sup> 1839 in New York.     |
| 27 | vii | <b>Allen<sup>3</sup> Waite</b> , born <sup>40</sup> 1841 in New York.      |

### Generation 3

8. **Dennis M.<sup>3</sup> Waite** (Benjamin<sup>2</sup>, John<sup>1</sup>), born<sup>41</sup> Feb 1799/1800 in Vermont; died<sup>42</sup> 3 Jan 1868 in Rodman, Jefferson, NY; buried<sup>43</sup> in Fairview Cemetery, Rodman, Jefferson, NY. He married<sup>44</sup> in 1826 in Rodman, Jefferson, NY **Eunice Smith**, born<sup>45, 46</sup> 3 Feb 1805 in Rodman, Jefferson, NY; died<sup>47, 48</sup> 16 Oct 1878 in Rodman, Jefferson, NY; buried<sup>49</sup> in Fairview Cemetery, Rodman, Jefferson, NY, daughter of Reuben Smith and Pamela Wright. Resided in<sup>50</sup> Rodman, Jefferson, NY (1817). Census<sup>51</sup> Rodman, Jefferson, NY (1850).

#### Child's Gazetteer of Jefferson County, New York; Town of Rodman

*"Dennis M. Wait, son of Benjamin, came to Rodman about 1817, when 18 years of age, and was apprenticed to learn the carpenter and joiners' trade, which was his occupation during the remainder of his life. He married Eunice, daughter of Reuben Smith, of Rodman, and settled on road 23, where the widow of Harlow B. Wait now lives, where he worked at his trade and was the principal carpenter in that locality. He had eight children, namely: Milo S. Ruth E. (Mrs. Miles Barrows), Mariette (Mrs. Franklin Toby), Charles M. Ermina E. (Mrs. G.E. Dean), Favoriat P. (Mrs. Eri Cooley), Wilfred D. and Harlow B. The latter married Nettie O. daughter of Gaius Oatman, of Adams, by whom he had a son, Harvey R. Harlow B. Wait was a prominent man in the town, and served as supervisor and road commissioner."*  
(JEFF)

<sup>31</sup>Ibid.

<sup>32</sup>Ibid.

<sup>33</sup>USC1850 Antwerp, Jefferson, New York. "1626 1660 Nathan W. Wait 57 M farmer 1500 Vermont; Charles 22 M NY; Sherman 19 M NY; Leywith 15 M NY; Allen 9 M NY; Mary 46 F NY; Elsey Etta 17 F NY; Cornelia 13 F NY; Louisa 11 F NY."

<sup>34</sup>CALC.

<sup>35</sup>Ibid.

<sup>36</sup>Ibid.

<sup>37</sup>Ibid.

<sup>38</sup>Ibid.

<sup>39</sup>Ibid.

<sup>40</sup>Ibid.

<sup>41</sup>Ibid.

<sup>42</sup>JEFF - Jefferson County, New York GenWeb (<http://www.rootsweb.com/~nyjeffer/>). Town of Rodman, Jefferson County, New York, Cemetery Inscriptions S-Y; courtesy of A.E. Rogers and Ellen & John Bartlett.

<sup>43</sup>Ibid. Town of Rodman, Jefferson County, New York, Cemetery Inscriptions S-Y; courtesy of A.E. Rogers and Ellen & John Bartlett.

<sup>44</sup>Ibid. Fairview Cemetery, Rodman W-Z.

<sup>45</sup>Ibid. Fairview Cemetery, Rodman W-Z.

<sup>46</sup>CALC.

<sup>47</sup>JEFF - Jefferson County, New York GenWeb (<http://www.rootsweb.com/~nyjeffer/>).

<sup>48</sup>Ibid. "...73y9m.". Town of Rodman, Jefferson County, New York, Cemetery Inscriptions S-Y; courtesy of A.E. Rogers and Ellen & John Bartlett.

<sup>49</sup>Ibid. Fairview Cemetery, Rodman W-Z.

<sup>50</sup>Ibid. Child's Gazetteer of Jefferson County, New York; Town of Rodman.

<sup>51</sup>USC1850 Rodman, Jefferson, New York. "440 5 70 71 Wait Dennis M 50 m farmer 6000 VT Eunice 45 f NY Charles M 16 m laborer NY Ermina E 14 f NY Favorite P 12 f NY Wilford D 7 m NY Harlo B 5 m NY".

Children of Dennis M. Waite and Eunice Smith were as follows:

- + 28 i **Milo S<sup>4</sup> Waite.**
- 29 ii **Ruth E<sup>4</sup> Waite**, born<sup>52</sup> 1828; died<sup>53</sup> 18 Jul 1896 in Rodman, Jefferson, NY; buried<sup>54</sup> in Fairview Cemetery, Rodman, Jefferson, NY. She married **Miles Barrows**, born<sup>55</sup> 1825; died<sup>56</sup> 27 Jan 1894 in Rodman, Jefferson, NY; buried<sup>57</sup> in Fairview Cemetery, Rodman, Jefferson, NY.
- 30 iii **Mariette<sup>4</sup> Waite**, born 1831 in Jefferson Co. NY. She married **Franklin Toby**.
- 31 iv **Charles M<sup>4</sup> Waite**, born<sup>58, 59</sup> 24 Mar 1834 in New York; died<sup>60</sup> 11 Mar 1905 in Rodman, Jefferson, NY; buried<sup>61</sup> in Fairview Cemetery, Rodman, Jefferson, NY. He married **Martha J. (---)**, born<sup>62</sup> 1 Jul 1836; died<sup>63</sup> 12 May 1886 in Rodman, Jefferson, NY; buried<sup>64</sup> in Fairview Cemetery, Rodman, Jefferson, NY.
- 32 v **Ermina E<sup>4</sup> Waite**, born<sup>65, 66</sup> 30 May 1836 in New York; died<sup>67</sup> 10 Mar 1893 in Rodman, Jefferson, NY; buried<sup>68</sup> in Fairview Cemetery, Rodman, Jefferson, NY. She married **George E Dean**.
- 33 vi **Favoriat P.<sup>4</sup> Waite**, born<sup>69</sup> 28 Jul 1838 in Rodman, Jefferson, NY. She married **Eri Cooley**.
- + 34 vii **Wilfred D<sup>4</sup> Waite.**
- + 35 viii **Harlow B.<sup>4</sup> Waite.**

13. **Almonson or Almeron B.<sup>3</sup> Waite** (Bowen<sup>2</sup>, John<sup>1</sup>). He married **Esther A.. [Gardner]**, born<sup>70, 71</sup> 1828/33 in New York; died<sup>72</sup> 10 Nov 1891 in East Rodman, East Rodman, Jefferson, NY; buried<sup>73</sup> in East Rodman Cemetery, East Rodman, NY.

Children of Almonson or Almeron B. Waite and Esther A.. [Gardner] were as follows:

- 36 i **Emma Jane<sup>4</sup> Waite**, born<sup>74</sup> 6 Mar 1850 in Ellisburg, Jefferson, NY; died<sup>75</sup> 12 Mar 1920 in Rodman, Jefferson, NY.
- 37 ii **Charlie B.<sup>4</sup> Waite**, born<sup>76</sup> Jan 1867; died<sup>77</sup> 5 Sep 1886 in East Rodman, East

<sup>52</sup>Ibid. Fairview Cemetery, Rodman, Jefferson, NY.

<sup>53</sup>Ibid. Fairview Cemetery, Rodman, Jefferson, NY.

<sup>54</sup>Ibid. Fairview Cemetery, Rodman, Jefferson, NY.

<sup>55</sup>Ibid. Fairview Cemetery, Rodman, Jefferson, NY.

<sup>56</sup>Ibid. Fairview Cemetery, Rodman, Jefferson, NY.

<sup>57</sup>Ibid. Fairview Cemetery, Rodman, Jefferson, NY.

<sup>58</sup>Ibid. Fairview Cemetery, Rodman W-Z.

<sup>59</sup>CALC.

<sup>60</sup>JEFF - Jefferson County, New York GenWeb (<http://www.rootsweb.com/~nyjeffer/>). Fairview Cemetery, Rodman W-Z.

<sup>61</sup>Ibid. Fairview Cemetery, Rodman W-Z.

<sup>62</sup>Ibid. Fairview Cemetery, Rodman W-Z.

<sup>63</sup>Ibid. "...49y10m.". Town of Rodman, Jefferson County, New York, Cemetery Inscriptions S-Y; courtesy of A.E. Rogers and Ellen & John Bartlett.

<sup>64</sup>Ibid. Town of Rodman, Jefferson County, New York, Cemetery Inscriptions S-Y; courtesy of A.E. Rogers and Ellen & John Bartlett.

<sup>65</sup>Ibid. Town of Rodman, Jefferson County, New York, Cemetery Inscriptions, D-H; courtesy of A.E. Rogers and Ellen & John Bancroft.

<sup>66</sup>CALC.

<sup>67</sup>JEFF - Jefferson County, New York GenWeb (<http://www.rootsweb.com/~nyjeffer/>). Town of Rodman, Jefferson County, New York, Cemetery Inscriptions, D-H; courtesy of A.E. Rogers and Ellen & John Bancroft.

<sup>68</sup>Ibid. "...30 May 1835 - 10 Mar 1890.". Town of Rodman, Jefferson County, New York, Cemetery Inscriptions S-Y; courtesy of A.E. Rogers and Ellen & John Bartlett.

<sup>69</sup>CALC.

<sup>70</sup>Ibid.

<sup>71</sup>BERTON - Records of Berton Waite Hoyt, Bhoyt1@aol.com.

<sup>72</sup>JEFF - Jefferson County, New York GenWeb (<http://www.rootsweb.com/~nyjeffer/>). "...58y.". Town of Rodman, Jefferson County, New York, Cemetery Inscriptions S-Y; courtesy of A.E. Rogers and Ellen & John Bartlett.

<sup>73</sup>Ibid. Town of Rodman, Jefferson County, New York, Cemetery Inscriptions S-Y; courtesy of A.E. Rogers and Ellen & John Bartlett.

<sup>74</sup>BERTON - Records of Berton Waite Hoyt, Bhoyt1@aol.com.

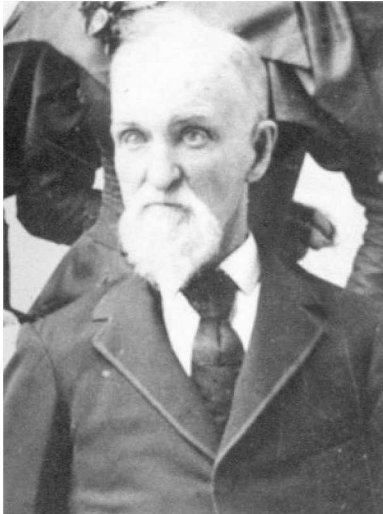
<sup>75</sup>Ibid.

<sup>76</sup>CALC.

Rodman, Jefferson, NY; buried<sup>78</sup> in East Rodman Cemetery, East Rodman, NY.

38    iii    **Emma<sup>4</sup> Waite**, born<sup>79</sup> 1850 in New York.

15. **Elon G.<sup>3</sup> Waite** (Bowen<sup>2</sup>, John<sup>1</sup>), born<sup>80, 81, 82</sup> 24 Jul 1824 in Rodman, Jefferson, NY; died<sup>83, 84</sup> 16 Oct 1905 in Worthington, IA; buried<sup>85</sup> in Row 15, Sec 2; Oak Hill Cemetery, Colesburg, Delaware, IA County, IA. He married (1)<sup>86, 87</sup> on 9 Jul 1851 in Syracuse, NY **Mary McGue**, born<sup>88, 89</sup> 14 May 1822 in Ireland; died<sup>90, 91</sup> 13 Jul 1871 in Jeffersonville, Clayton, IA; buried<sup>92</sup> in Row 15, Sec 2; Oak Hill Cemetery, Colesburg, Delaware, IA; (2) **Hannah Good**, born<sup>93</sup> in England, daughter of Titus Good.



Children of Elon G. Waite and Mary McGue were as follows:

- + 39    i        **Mary Jane<sup>4</sup> Waite.**
- + 40    ii        **Martha A.<sup>4</sup> Waite.**
- + 41    iii        **Alice Louisa<sup>4</sup> Waite.**
- 42    iv        **Carrie E<sup>4</sup> Waite**, born<sup>94, 95</sup> 24 Feb 1858 in Fulton, NY; died<sup>96</sup> 31 Aug 1931 in Independence, IA. She married<sup>97</sup> on 11 Mar 1890 in Greeley, IA **Jesse W. Clendenen.**
- + 43    v         **Flora E<sup>4</sup> Waite.**
- + 44    vi         **Nettie E.<sup>4</sup> Waite**
- 45    vii       **Elliot Eugene<sup>4</sup> Waite**, born<sup>98, 99</sup> 1864 in Jeffersonville, Clayton, IA; died<sup>100, 101</sup> 9 Jan 1867 in Jeffersonville, Clayton, IA.

Children of Elon G. Waite and Hannah Good were as follows:

- 46    i        **Alberti D<sup>4</sup> Waite**, born<sup>102, 103</sup> 6 Jun 1875 in Jeffersonville, Clayton, IA.
- 47    ii       **Jessie<sup>4</sup> Waite**, born<sup>104, 105</sup> Mar 1877 in Jeffersonville, Clayton, IA.

<sup>77</sup>JEFF - Jefferson County, New York GenWeb (<http://www.rootsweb.com/~nyjeffer/>). "...19y8m.". Town of Rodman, Jefferson County, New York, Cemetery Inscriptions S-Y; courtesy of A.E. Rogers and Ellen & John Bartlett.

<sup>78</sup>Ibid. Town of Rodman, Jefferson County, New York, Cemetery Inscriptions S-Y; courtesy of A.E. Rogers and Ellen & John Bartlett.

<sup>79</sup>CALC.

<sup>80</sup>HOLM - Records of Kurt Holman, dkholman@ure.net.

<sup>81</sup>HEYER - Records of Kathy Heyer, kathyhey@n-connect.net.

<sup>82</sup>BERTON - Records of Berton Waite Hoyt, Bhoyt1@aol.com.

<sup>83</sup>HOLM - Records of Kurt Holman, dkholman@ure.net.

<sup>84</sup>HEYER - Records of Kathy Heyer, kathyhey@n-connect.net.

<sup>85</sup>BERTON - Records of Berton Waite Hoyt, Bhoyt1@aol.com.

<sup>86</sup>HEYER - Records of Kathy Heyer, kathyhey@n-connect.net.

<sup>87</sup>HOLM - Records of Kurt Holman, dkholman@ure.net.

<sup>88</sup>HEYER - Records of Kathy Heyer, kathyhey@n-connect.net.

<sup>89</sup>HOLM - Records of Kurt Holman, dkholman@ure.net.

<sup>90</sup>HEYER - Records of Kathy Heyer, kathyhey@n-connect.net.

<sup>91</sup>HOLM - Records of Kurt Holman, dkholman@ure.net.

<sup>92</sup>BERTON - Records of Berton Waite Hoyt, Bhoyt1@aol.com.

<sup>93</sup>Ibid.

<sup>94</sup>HEYER - Records of Kathy Heyer, kathyhey@n-connect.net.

<sup>95</sup>HOLM - Records of Kurt Holman, dkholman@ure.net.

<sup>96</sup>Ibid.

<sup>97</sup>Ibid.

<sup>98</sup>HEYER - Records of Kathy Heyer, kathyhey@n-connect.net.

<sup>99</sup>HOLM - Records of Kurt Holman, dkholman@ure.net.

<sup>100</sup>HEYER - Records of Kathy Heyer, kathyhey@n-connect.net.

<sup>101</sup>HOLM - Records of Kurt Holman, dkholman@ure.net.

<sup>102</sup>HEYER - Records of Kathy Heyer, kathyhey@n-connect.net. "...also know as Graham, IA."

<sup>103</sup>HOLM - Records of Kurt Holman, dkholman@ure.net.

<sup>104</sup>HEYER - Records of Kathy Heyer, kathyhey@n-connect.net. "...also know as Graham, IA."

<sup>105</sup>HOLM - Records of Kurt Holman, dkholman@ure.net.

17. **Martin P.<sup>3</sup> Waite** (Bowen<sup>2</sup>, John<sup>1</sup>), born<sup>106, 107, 108, 109</sup> 11 Sep 1831/32 in Rodman, Jefferson, NY; died<sup>110, 111</sup> 28 Nov 1910 in Rodman, Jefferson, NY; buried<sup>112</sup> in Fairview Cemetery, Rodman, Jefferson, NY. He married<sup>113</sup> in 1850 **Mary Eliza Clark**, born<sup>114, 115</sup> 25 Sep 1831 in Lyme, NY; died<sup>116</sup> 11 Nov 1915 in Rodman, Jefferson, NY; buried<sup>117</sup> in Fairview Cemetery, Rodman, Jefferson, NY, daughter of Joseph Clark. Commissioner of Highways & Bridges. (SSOJ)

Children of Martin P. Waite and Mary Eliza Clark were as follows:

- 48 i **Orin<sup>4</sup> Waite**, born<sup>118</sup> Jan 1852; died<sup>119</sup> 2 Sep 1852 in Rodman, Jefferson, NY; buried<sup>120</sup> in Fairview Cemetery, Rodman, Jefferson, NY.
- 49 ii **Armenzo P.<sup>4</sup> Waite**, born<sup>121</sup> Aug 1853; died<sup>122, 123</sup> 16 Dec 1863.
- 50 iii **Estella L.<sup>4</sup> Waite**, born<sup>124</sup> Jul 1858; died<sup>125, 126</sup> 29 Dec 1863 in Rodman, Jefferson, NY; buried<sup>127</sup> in Fairview Cemetery, Rodman, Jefferson, NY.
- 51 iv **Viola B.<sup>4</sup> Waite**.
- 52 v **Nora A.<sup>4</sup> Waite**.
- + 53 vi **Burt P.<sup>4</sup> Waite**.

18. **Phoebe Jenette<sup>3</sup> Waite** (Bowen<sup>2</sup>, John<sup>1</sup>), born<sup>128</sup> 17 May 1833; died<sup>129</sup> 24 Feb 1874 in Rodman, Jefferson, NY; buried<sup>130</sup> in Fairview Cemetery, Rodman, Jefferson, NY. She married<sup>131</sup> on 15 May 1853 **Delos S Cooley**, born<sup>132</sup> 1 Jan 1834; died<sup>133</sup> 21 Nov 1895 in Rodman, Jefferson, NY; buried<sup>134</sup> in Fairview Cemetery, Rodman, Jefferson, NY, son of Ora Cooley and Amanda Greenley.

Children of Phoebe Jenette Waite and Delos S Cooley were as follows:

- 54 i **Jannette<sup>4</sup> Cooley**, born<sup>135</sup> 1 Mar 1855; died<sup>136</sup> 1920 in Rodman, Jefferson, NY; buried<sup>137</sup> in Fairview Cemetery, Rodman, Jefferson, NY.

<sup>106</sup>JEFF - Jefferson County, New York GenWeb (<http://www.rootsweb.com/~nyjeffer/>). Fairview Cemetery, Rodman W-Z.

<sup>107</sup>SSOJ - Stoddard Sojourners; mmrichards@earthlink.net (<http://www.gencircles.com/users/rosetta>).

<sup>108</sup>CALC.

<sup>109</sup>BERTON - Records of Berton Waite Hoyt. Bhozt1@aol.com.

<sup>110</sup>JEFF - Jefferson County, New York GenWeb (<http://www.rootsweb.com/~nyjeffer/>). Fairview Cemetery, Rodman W-Z.

<sup>111</sup>Ibid. "...11 Sep 1910.". Town of Rodman, Jefferson County, New York; Cemetery Inscriptions, S-Y; Courtesy of A.E. Rogers, Ellen & John Bartlett.

<sup>112</sup>Ibid. Fairview Cemetery, Rodman W-Z.

<sup>113</sup>SSOJ - Stoddard Sojourners; mmrichards@earthlink.net (<http://www.gencircles.com/users/rosetta>).

<sup>114</sup>JEFF - Jefferson County, New York GenWeb (<http://www.rootsweb.com/~nyjeffer/>). Fairview Cemetery, Rodman W-Z.

<sup>115</sup>SSOJ - Stoddard Sojourners; mmrichards@earthlink.net (<http://www.gencircles.com/users/rosetta>).

<sup>116</sup>JEFF - Jefferson County, New York GenWeb (<http://www.rootsweb.com/~nyjeffer/>). Fairview Cemetery, Rodman W-Z.

<sup>117</sup>Ibid. Fairview Cemetery, Rodman W-Z.

<sup>118</sup>CALC.

<sup>119</sup>JEFF - Jefferson County, New York GenWeb (<http://www.rootsweb.com/~nyjeffer/>). "...8m.". Town of Rodman, Jefferson County, New York, Cemetery Inscriptions S-Y; courtesy of A.E. Rogers and Ellen & John Bartlett.

<sup>120</sup>Ibid. Town of Rodman, Jefferson County, New York, Cemetery Inscriptions S-Y; courtesy of A.E. Rogers and Ellen & John Bartlett.

<sup>121</sup>Ibid. Fairview Cemetery, Rodman W-Z.

<sup>122</sup>Ibid. Fairview Cemetery, Rodman W-Z.

<sup>123</sup>Ibid. "...10y4m.". Town of Rodman, Jefferson County, New York, Cemetery Inscriptions S-Y; courtesy of A.E. Rogers and Ellen & John Bartlett.

<sup>124</sup>Ibid. Fairview Cemetery, Rodman W-Z.

<sup>125</sup>Ibid. Fairview Cemetery, Rodman W-Z.

<sup>126</sup>Ibid. "...5y10m.". Town of Rodman, Jefferson County, New York, Cemetery Inscriptions S-Y; courtesy of A.E. Rogers and Ellen & John Bartlett.

<sup>127</sup>Ibid. Fairview Cemetery, Rodman W-Z.

<sup>128</sup>SSOJ - Stoddard Sojourners; mmrichards@earthlink.net (<http://www.gencircles.com/users/rosetta>).

<sup>129</sup>Ibid.

<sup>130</sup>Ibid.

<sup>131</sup>Ibid.

<sup>132</sup>Ibid.

<sup>133</sup>Ibid.

<sup>134</sup>Ibid.

<sup>135</sup>Ibid.

<sup>136</sup>Ibid.

<sup>137</sup>Ibid.

## Generation 4

28. **Milo S<sup>4</sup> Waite** (Dennis M.<sup>3</sup>, Benjamin<sup>2</sup>, John<sup>1</sup>), born<sup>138, 139</sup> 1827 in New York; died<sup>140</sup> 24 Jun 1897 in Rodman, Jefferson, NY; buried<sup>141</sup> in Fairview Cemetery, Rodman, Jefferson, NY. He married<sup>142</sup> in 1847 **Miranda Gardner**, born<sup>143, 144</sup> 1827 in New York; died<sup>145</sup> 29 Jun 1912 in Rodman, Jefferson, NY; buried<sup>146</sup> in Fairview Cemetery, Rodman, Jefferson, NY, daughter of Job Gardner and Laura Chase. Census<sup>147</sup> Rodman, Jefferson, NY (1850). Census<sup>148</sup> Pierpont, St. Lawrence, NY (1880).

Children of Milo S Waite and Miranda Gardner were as follows:

- 55 i **Orin<sup>5</sup> Waite**, born<sup>149</sup> 1849 in New York.
- 56 ii **Ellen A.<sup>5</sup> Waite**, born<sup>150</sup> Apr 1851; died<sup>151</sup> 21 Jul 1860 in Rodman, Jefferson, NY; buried<sup>152</sup> in Fairview Cemetery, Rodman, Jefferson, NY.
- 57 iii **Ella<sup>5</sup> Waite**, born<sup>153</sup> Apr 1851; died<sup>154</sup> 1890; buried<sup>155</sup> in Fairview Cemetery, Rodman, Jefferson, NY.
- 58 iv **Orson<sup>5</sup> Waite**, born<sup>156</sup> 1867 in New York.

34. **Wilfred D<sup>4</sup> Waite** (Dennis M.<sup>3</sup>, Benjamin<sup>2</sup>, John<sup>1</sup>), born<sup>157, 158</sup> 22 Feb 1843 in New York; died<sup>159</sup> 1 Apr 1897 in Rodman, Jefferson, NY; buried<sup>160</sup> in Fairview Cemetery, Rodman, Jefferson, NY. He married **Medora P. vandervoort**, born<sup>161</sup> 31 Jul 1845; died<sup>162</sup> 26 Jun 1925; buried<sup>163</sup> in Fairview Cemetery, Rodman, Jefferson, NY.

Children of Wilfred D Waite and Medora P. vandervoort were as follows:

- 59 i **Eva F<sup>5</sup> Waite**, born<sup>164</sup> 22 Aug 1872; died in Rodman, Jefferson, NY; buried<sup>165</sup> in Fairview Cemetery, Rodman, Jefferson, NY.

<sup>138</sup>JEFF - Jefferson County, New York GenWeb (<http://www.rootsweb.com/~nyjeffer/>). Fairview Cemetery, Rodman W-Z.

<sup>139</sup>CALC.

<sup>140</sup>JEFF - Jefferson County, New York GenWeb (<http://www.rootsweb.com/~nyjeffer/>). Fairview Cemetery, Rodman W-Z.

<sup>141</sup>Ibid. Fairview Cemetery, Rodman W-Z.

<sup>142</sup>Ibid. Fairview Cemetery, Rodman W-Z.

<sup>143</sup>Ibid. Fairview Cemetery, Rodman W-Z.

<sup>144</sup>CALC.

<sup>145</sup>JEFF - Jefferson County, New York GenWeb (<http://www.rootsweb.com/~nyjeffer/>). Fairview Cemetery, Rodman W-Z.

<sup>146</sup>Ibid. Fairview Cemetery, Rodman W-Z.

<sup>147</sup>USC1850 Rodman, Jefferson, New York. "440 42 69 70 Wait Milo 23 m farmer NY Miranda 23 f NY Orin 1 m NY Amanda 16 f NY Turner John 15 m laborer NY".

<sup>148</sup>USC1880 Pierpont, St. Lawrence, New York. "...Jennie McCordy also in household age 21.".

<sup>149</sup>CALC.

<sup>150</sup>JEFF - Jefferson County, New York GenWeb (<http://www.rootsweb.com/~nyjeffer/>). Fairview Cemetery, Rodman W-Z.

<sup>151</sup>Ibid. "...9y3m.". Town of Rodman, Jefferson County, New York, Cemetery Inscriptions S-Y; courtesy of A.E. Rogers and Ellen & John Bartlett (listed a second time as Ella).

<sup>152</sup>Ibid. Fairview Cemetery, Rodman W-Z.

<sup>153</sup>Ibid. Fairview Cemetery, Rodman W-Z.

<sup>154</sup>Ibid. Fairview Cemetery, Rodman W-Z.

<sup>155</sup>Ibid. Fairview Cemetery, Rodman W-Z.

<sup>156</sup>CALC.

<sup>157</sup>JEFF - Jefferson County, New York GenWeb (<http://www.rootsweb.com/~nyjeffer/>). Town of Rodman, Jefferson County, New York, Cemetery Inscriptions S-Y; courtesy of A.E. Rogers and Ellen & John Bartlett.

<sup>158</sup>CALC.

<sup>159</sup>JEFF - Jefferson County, New York GenWeb (<http://www.rootsweb.com/~nyjeffer/>). Town of Rodman, Jefferson County, New York, Cemetery Inscriptions S-Y; courtesy of A.E. Rogers and Ellen & John Bartlett.

<sup>160</sup>Ibid. Town of Rodman, Jefferson County, New York, Cemetery Inscriptions S-Y; courtesy of A.E. Rogers and Ellen & John Bartlett.

<sup>161</sup>Ibid. Town of Rodman, Jefferson County, New York, Cemetery Inscriptions S-Y; courtesy of A.E. Rogers and Ellen & John Bartlett.

<sup>162</sup>Ibid. Town of Rodman, Jefferson County, New York, Cemetery Inscriptions S-Y; courtesy of A.E. Rogers and Ellen & John Bartlett.

<sup>163</sup>Ibid. Town of Rodman, Jefferson County, New York, Cemetery Inscriptions S-Y; courtesy of A.E. Rogers and Ellen & John Bartlett.

<sup>164</sup>Ibid. Town of Rodman, Jefferson County, New York, Cemetery Inscriptions S-Y; courtesy of A.E. Rogers and Ellen & John Bartlett.

<sup>165</sup>Ibid. Town of Rodman, Jefferson County, New York, Cemetery Inscriptions S-Y; courtesy of A.E. Rogers and Ellen & John Bartlett.

35. **Harlow B.<sup>4</sup> Waite** (Dennis M.<sup>3</sup>, Benjamin<sup>2</sup>, John<sup>1</sup>), born<sup>166</sup> 1845 in Rodman, Jefferson, NY. He married **Nettie O. Oatman**, daughter of Gaius Oatman.

Children of Harlow B. Waite and Nettie O. Oatman were as follows:

60 i **Harvey R.<sup>5</sup> Waite.**

39. **Mary Jane<sup>4</sup> Waite** (Elon G.<sup>3</sup>, Bowen<sup>2</sup>, John<sup>1</sup>), born<sup>167, 168</sup> 29 Apr 1852 in Fulton, NY; died<sup>169</sup> 5 Nov 1935 in Worthington, IA. She married<sup>170</sup> on 26 Jun 1883 in Greeley, IA **Robert Bell**.

Children of Mary Jane Waite and Robert Bell were as follows:

61 i **Marguerite Jane<sup>5</sup> Bell**, born<sup>171</sup> 8 Mar 1884 in Worthington, IA; died<sup>172</sup> 3 Jun 1940 in Dubuque, IA. She married<sup>173</sup> on 5 Feb 1930 in Worthington, IA **Roy O. Phelps**.

40. **Martha A.<sup>4</sup> Waite** (Elon G.<sup>3</sup>, Bowen<sup>2</sup>, John<sup>1</sup>), born<sup>174</sup> 14 Dec 1853 in Fulton, NY; died<sup>175</sup> 12 Nov 1920 in Epworth, IA. She married<sup>176</sup> on 16 Sep 1875 in Jeffersonville, IA **George Joseph Graham**, son of Joseph Graham and Adeline Haven.

Children of Martha A. Waite and George Joseph Graham were as follows:

62 i **Mabel G.<sup>5</sup> Graham**, born<sup>177</sup> 14 Jun 1876 in Jeffersonville, IA; died<sup>178</sup> 14 Apr 1967 in Des Moines, IA. She married<sup>179</sup> on 16 Sep 1901 in Graham, IA **Rev. James B. Bird**.

63 ii **Blanche A.<sup>5</sup> Graham**, born<sup>180</sup> 19 Aug 1877 in Jeffersonville, IA; died<sup>181</sup> 4 Jul 1907 in Frederika, IA. She married<sup>182</sup> on 22 Jun 1903 in Frederika, IA **Claude Lytle**.

64 iii **Edith Carrie<sup>5</sup> Graham**, born<sup>183</sup> 6 May 1881 in Osterdock, IA; died<sup>184</sup> 10 Jan 1964 in Edgewood, IA. She married<sup>185</sup> on 22 Feb 1905 in Graham, IA **Charles Ulysses Gull**.

65 iv **Ross E.<sup>5</sup> Graham**, born<sup>186</sup> 18 May 1885.

66 v **Alice J.<sup>5</sup> Graham**, born<sup>187</sup> 21 Sep 1887 in Jeffersonville, IA; died<sup>188</sup> 12 Nov 1969 in Epworth, IA. She married<sup>189</sup> on 27 May 1920 in Epworth, IA **Victor Ross**, born<sup>190</sup>

<sup>166</sup>CALC.

<sup>167</sup>HEYER - Records of Kathy Heyer, kathyheyer@n-connect.net.

<sup>168</sup>HOLM - Records of Kurt Holman, dkholman@ure.net.

<sup>169</sup>Ibid.

<sup>170</sup>Ibid.

<sup>171</sup>Ibid.

<sup>172</sup>Ibid.

<sup>173</sup>Ibid.

<sup>174</sup>HEYER - Records of Kathy Heyer, kathyheyer@n-connect.net.

<sup>175</sup>HOLM - Records of Kurt Holman, dkholman@ure.net.

<sup>176</sup>Ibid.

<sup>177</sup>Ibid.

<sup>178</sup>Ibid.

<sup>179</sup>Ibid.

<sup>180</sup>Ibid.

<sup>181</sup>Ibid.

<sup>182</sup>Ibid.

<sup>183</sup>Ibid.

<sup>184</sup>Ibid.

<sup>185</sup>Ibid.

<sup>186</sup>Ibid.

<sup>187</sup>Ibid.

<sup>188</sup>Ibid.

<sup>189</sup>Ibid.

<sup>190</sup>Ibid.



May 1891 in Taylor Twp. Dubuque, IA; christened<sup>191</sup> 19 Sep 1917; died<sup>192</sup> 1934 in Epworth, IA, son of Charles Ross and Cora Dewhirst.

41. **Alice Louisa<sup>4</sup> Waite** (Elon G.<sup>3</sup>, Bowen<sup>2</sup>, John<sup>1</sup>), born<sup>193</sup> 14 May 1856 in Fulton, NY; died<sup>194</sup> 29 Jan 1941 in Mason City, IA. She married<sup>195</sup> on 13 Oct 1891 in Sioux City, IA **Rev. Elmer B. Tucker**.

Children of Alice Louisa Waite and Rev. Elmer B. Tucker were as follows:

- 67 i **Ruth Helen<sup>5</sup> Tucker**, born<sup>196</sup> 15 Oct 1894 in Des Moines, IA; died<sup>197</sup> 20 Jul 1966 in Albuquerque, NM. She married<sup>198</sup> on 12 Dec 1922 in Harlan, IA **Grover C. Abrell**.
- 68 ii **Bessie June<sup>5</sup> Tucker**, born<sup>199</sup> 2 Jun 1896 in New Hampton, IA. She married (1)<sup>200</sup> on 11 Jun 1941 in Harlan, IA **Roy C. Phelps**; (2)<sup>201</sup> on 4 Mar 1965 in Winlock, WA **William J. Boreen**.
- 69 iii **Maude Alice<sup>5</sup> Tucker**, born<sup>202</sup> 8 Jul 1898 in Kirkman, IA. She married<sup>203</sup> on 21 Jan 1920 in Kirkman, IA **William Francis McGee**.

43. **Flora E<sup>4</sup> Waite** (Elon G.<sup>3</sup>, Bowen<sup>2</sup>, John<sup>1</sup>), born<sup>204, 205</sup> 7 Nov 1859 in Jeffersonville, Clayton, IA; died<sup>206</sup> 5 Apr 1947 in Rapid City, SD; buried<sup>207</sup> in Linton, ND. She married<sup>208</sup> on 13 Feb 1888 **Judson Isaac Wells**, buried<sup>209</sup> in Linton, ND.

Children of Flora E Waite and Judson Isaac Wells were as follows:

- 70 i **Jayne Bell<sup>5</sup> Wells**, born<sup>210</sup> 13 Mar 1890 in Howard, SD. She married<sup>211</sup> on 30 Jun 1907 in Mound City, SD **Bert E Hoyt**.
- 71 ii **Elon G<sup>5</sup> Wells**, born<sup>212</sup> 29 Nov 1900 in Howard, SD; died<sup>213</sup> 13 Jan 1934 in Linton, ND; buried<sup>214</sup> in Linton, ND. He married<sup>215</sup> on 21 Jun 1932 **Frances Cook**.

44. **Nettie E.<sup>4</sup> Waite** (Elon G.<sup>3</sup>, Bowen<sup>2</sup>, John<sup>1</sup>), born<sup>216, 217</sup> 12 Nov 1861 in Jeffersonville, Clayton, IA;

<sup>191</sup>Ibid. "...joined the Army."

<sup>192</sup>Ibid.

<sup>193</sup>HEYER - Records of Kathy Heyer, kathyheyer@n-connect.net.

<sup>194</sup>HOLM - Records of Kurt Holman, dkholman@ure.net.

<sup>195</sup>Ibid.

<sup>196</sup>Ibid.

<sup>197</sup>Ibid.

<sup>198</sup>Ibid.

<sup>199</sup>Ibid.

<sup>200</sup>Ibid.

<sup>201</sup>Ibid.

<sup>202</sup>Ibid.

<sup>203</sup>Ibid.

<sup>204</sup>HEYER - Records of Kathy Heyer, kathyheyer@n-connect.net.

<sup>205</sup>HOLM - Records of Kurt Holman, dkholman@ure.net.

<sup>206</sup>Ibid.

<sup>207</sup>BERTON - Records of Berton Waite Hoyt, Bhoyt1@aol.com.

<sup>208</sup>HOLM - Records of Kurt Holman, dkholman@ure.net.

<sup>209</sup>BERTON - Records of Berton Waite Hoyt, Bhoyt1@aol.com.

<sup>210</sup>HOLM - Records of Kurt Holman, dkholman@ure.net.

<sup>211</sup>Ibid.

<sup>212</sup>Ibid.

<sup>213</sup>Ibid.

<sup>214</sup>BERTON - Records of Berton Waite Hoyt, Bhoyt1@aol.com.

<sup>215</sup>HOLM - Records of Kurt Holman, dkholman@ure.net.

<sup>216</sup>HEYER - Records of Kathy Heyer, kathyheyer@n-connect.net.

<sup>217</sup>HOLM - Records of Kurt Holman, dkholman@ure.net.

died<sup>218</sup> 27 Jul 1954 in Independence, IA. She married<sup>219</sup> on 26 Jun 1888 in Greeley, IA **John W. Funk**.

Children of Nettie E. Waite and John W. Funk were as follows:

- 72 i **Viola**<sup>5</sup> **Funk**, born 26 Aug 1890 in Coggon, IA; died<sup>220</sup> 1931 in Oelwein, IA.
- 73 ii **Lloyd Waite**<sup>5</sup> **Funk**, born<sup>221</sup> 4 Dec 1892 in Coggon, IA; died<sup>222</sup> 8 Jul 1893 in Coggon, IA.
- 74 iii **Polly**<sup>5</sup> **Funk**, born<sup>223</sup> 10 Nov 1895 in Coggon, IA; died<sup>224</sup> 13 Nov 1895 in Coggon, IA.

53. **Burt P.**<sup>4</sup> **Waite** (Martin P.<sup>3</sup>, Bowen<sup>2</sup>, John<sup>1</sup>), born<sup>225, 226</sup> Nov 1871/72; died<sup>227</sup> 14 Feb 1946 in Rodman, Jefferson, NY; buried<sup>228</sup> in Fairview Cemetery, Rodman, Jefferson, NY. He married (1) **Inez M Cole**, born<sup>229</sup> 14 Aug 1881; died<sup>230</sup> 28 May 1905 in Rodman, Jefferson, NY; buried<sup>231</sup> in Fairview Cemetery, Rodman, Jefferson, NY, daughter of Curtis Cole; (2) **Lillian Dean**, born<sup>232</sup> 1878; died<sup>233</sup> 29 Nov 1927; buried<sup>234</sup> in Fairview Cemetery, Rodman, Jefferson, NY.

Children of Burt P. Waite and Inez M Cole were as follows:

- 75 i **Howard L.**<sup>5</sup> **Waite**, born<sup>235</sup> 1904; died<sup>236</sup> 1980 in Rodman, Jefferson, NY; buried<sup>237</sup> in Fairview Cemetery, Rodman, Jefferson, NY.

---

<sup>218</sup>Ibid.

<sup>219</sup>Ibid.

<sup>220</sup>Ibid.

<sup>221</sup>Ibid.

<sup>222</sup>Ibid.

<sup>223</sup>Ibid.

<sup>224</sup>Ibid.

<sup>225</sup>JEFF - Jefferson County, New York GenWeb (<http://www.rootsweb.com/~nyjeffer/>). Fairview Cemetery, Rodman W-Z.

<sup>226</sup>BERTON - Records of Berton Waite Hoyt, Bhoyt1@aol.com.

<sup>227</sup>JEFF - Jefferson County, New York GenWeb (<http://www.rootsweb.com/~nyjeffer/>). Fairview Cemetery, Rodman W-Z.

<sup>228</sup>Ibid. Fairview Cemetery, Rodman W-Z.

<sup>229</sup>Ibid. Fairview Cemetery, Rodman W-Z.

<sup>230</sup>Ibid. Fairview Cemetery, Rodman W-Z.

<sup>231</sup>Ibid. Fairview Cemetery, Rodman W-Z.

<sup>232</sup>Ibid. Fairview Cemetery, Rodman W-Z.

<sup>233</sup>Ibid. Fairview Cemetery, Rodman W-Z.

<sup>234</sup>Ibid. Fairview Cemetery, Rodman W-Z.

<sup>235</sup>Ibid. Fairview Cemetery, Rodman W-Z.

<sup>236</sup>Ibid. Fairview Cemetery, Rodman W-Z.

<sup>237</sup>Ibid. Fairview Cemetery, Rodman W-Z.